

Budget Report 2025 - 26

Cllr Ashley Baxter
Leader of the Council
Cabinet Member for Finance,
HR and Economic Development
27 February 2025

1

We will not speculate about

Local Government Reorganisation

(We might do later!)

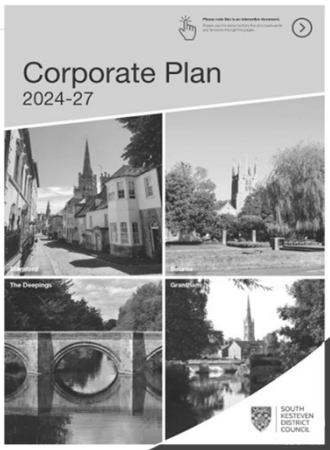




2

Headline figures

- Council Tax Base
50,140.5
- Council Tax (Band D)
£189.37
- Budgeted cost of services
£24,008,000


Corporate Plan 2024-27

3

Council Tax Details 2025/26



	2024/25 Band D £	2025/26 Band D £	Increase £	Increase %
Lincolnshire County Council	1,578.69	1,625.85	47.16	2.99
Lincolnshire Police & Crime Commissioner	304.20	318.25	13.95	4.59
South Kesteven District Council	171.81	177.30	5.49	3.20
South Kesteven + Special Expenses	183.89	189.37	5.48	2.98
South Kesteven + Special Expenses + Parishes	232.12	242.95	10.83	4.67



4

Minimum Revenue Provision


	2025/26 £'000s	2026/27 £'000s	2027/28 £'000s
Existing MRP (Legacy Borrowing)	116	111	107
St Martin's Park	155	152	149
New Waste Depot	0	283	277
Total	271	546	533

5

Budget Increase Proposals 1 (Recurring)

Details	Cost £'000
Customer Service Centre	28
Turnpike Depot	27
Conduit Road Conveniences	12
Homelessness Support Officer	45
Domestic Abuse Prevention Officer	45
Welfare Officers (x2)	37
Licensing Support Officer	28
Empty Homes Officer	18
Graduate Apprenticeships	28
Single Person Discount	9
Sub-total	



6

Budget Increase Proposals 2 (Recurring)

Details	Cost £'000
Carried over from previous page	
Drainage Rates	79
Insurance	44
External Audit	15
Local Plan	216
Apprenticeship Levy	10
TOTAL of NEW RECURRING EXPENDITURE	641



7

Budget Increase Proposals (One-off)

Details	Cost £'000
Turnpike Depot fit-out	500
Backlog maintenance	1,000
Homeless Emergency Accom'n	300
LeisureSK Ltd Cashflow Support	150
Grantham Canal Flood Defence	100
SK House Refurbishment	30
Grounds Maintenance Equipment	37
Garden Village Consultancy	30
Replanting and Woodland Initiatives	288
Grantham Town Engagement Manager	38
Grantham Town Events	127
Econ Dev Project Support Officer	44
TOTAL ONE-OFF	2,381



8

Capital Proposals



9

Consultation

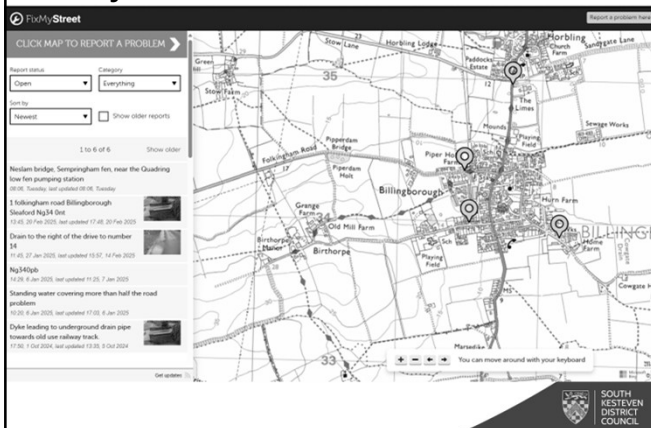
Do you support the proposal to increase SKDC's element of Council Tax by 3% (or £5.51/Band D) for 2025/26? (and previous year)

	No. 2024/25	%	No. 2025/26	%
Yes	380	48.0	423	55.2
No	366	46.2	281	36.6
Don't know/ not sure	46	5.8	63	8.2
Total	792	100.0	792	100.0



10

Fix My Street



11



'Alone we can do so little;
together we can do so much.'

– Helen Keller



12